



Arthur Eric Rowton Gill

Geboren am 22. Februar 1882 in Brighton, gestorben am 17. November 1940 in North Dean/High Wycombe. Bildhauer, Grafiker und Kunsttheoretiker. Studium an der Chichester Technical and Art School. Von 1900 bis 1903 Architekturstudium. Danach Schriftkurse bei Edward Johnston an der Central School of Arts and Crafts, London. Ab 1907 in Ditchling/Sussex ansässig.

Aries Type	1932	Stourton Press	www.myfonts.com
<i>Aries Type Italic</i>	1932	Stourton Press	www.myfonts.com
Bunyan <small>siehe Pilgrim</small>	1934	Limited Editions Club	
FLORIATED CAPITALS 431	1935	Monotype	Linotype
Gill Hebrew <small>von Mark E. Shoulson bearbeitet</small>	2004	Lerfu Type Foundry	www.myfonts.com
Gill Facia		Monotype	Linotype
<i>Gill Facia Italic</i>		Monotype	Linotype
Gill Sans Light 362	1929	Monotype	Linotype
<i>Gill Sans Light Italic 362</i>	1929	Monotype	Linotype
Gill Sans 262	1928	Monotype	Linotype
<i>Gill Sans Italic 262</i>	1928	Monotype	Linotype
Gill Sans Bold 275	1929	Monotype	Linotype
<i>Gill Sans Bold Italic 275</i>	1929	Monotype	Linotype
Gill Sans X Bold 321	1929	Monotype	Linotype
Gill Sans Ult Bd 442	1929	Monotype	Linotype
Gill Sans Condensed 485	1929	Monotype	Linotype
Gill Sans Bold Cond. 343	1929	Monotype	Linotype
<i>Gill Sans Bold Extra Condensed 468</i>	1929	Monotype	Linotype
Gill Sans Ultra Bd Cd	1929	Monotype	Linotype

Gill Sans Titling 231		Monotype	
Gill Sans Bold Titling 317		Monotype	
Gill Sans Bold Cond Titling 373		Monotype	
Gill Sans X Bold Titling 526		Monotype	
Gill Sans Poster 353		Monotype	
Gill Sans Cameo 233		Monotype	
Gill Sans Cameo Ruled 299		Monotype	
GILL SANS SHADOW 304	1929	Monotype	Linotype
Gill Sans Shadow 338		Monotype	
Gill Sans Shadow 406	1929	Monotype	Linotype
Gill Sans Shadow 408		Monotype	
Gill Sans Shadow Line 290		Monotype	
Golden Cockerel Type	1929	Colden Cock. Press	Linotype
Jubilee	1934	Stephenson Blake	
Joanna 478	1937	Monotype	Linotype
Joanna Italic 478	1937	Monotype	Linotype
Perpetua 239	1928	Monotype	Linotype
<i>Perpetua Italic</i> 239	1929	Monotype	Linotype
Perpetua Bold 461		Monotype	Linotype
<i>Perpetua Bold Italic 461</i>		Monotype	Linotype
Perpetua Light Titling 480		Monotype	
Perpetua Titling 258		Monotype	
Perpetua Bold Titling 200		Monotype	
Pilgrim	1953	Linotype	Linotype
nach <i>Bunyan</i> von Walter Tracy entwickelt			
Solus 276	1929	Monotype	myfonts.com*
* hier <i>New Solus</i> genannt			

Eric Gill im Web:

<http://www.ericgill.org.uk/>

<http://www.ditchling-museum.com/>

Literatur:

Attwater, D.: *A Cell of Good Living: The Life, Works and Opinions of Eric Gill*, 1969

Brady, Elizabeth: *Eric Gill: Twentieth Century Book Designer*, 1974

Brewer, Roy: *Eric Gill: The man who Loved Letters*, 1973

Carter, Sebastian: The faces of Eric Gill, in: *xheight*, Vol. 4, No. 2, Westport 1995, S. 11–13

Collins, Judith: *Eric Gill: The Sculpture*, 2006

Farey, Dave: *The birth & rebirth of Aries*, in: *xheight*, Vol. 4, No. 2, Westport 1995, S. 6–10

Gill, Eric: *Essay on Typography*, 1993

Gill, Eric: *The Inscriptions*, 1994

Gill, Eric: *Autobiography*, 2007

Harling, Robert: *The Letter Forms and Type Designs of Eric Gill*, Westerham 1976

Holliday, Peter: *Eric Gill in Ditchling*, 2002

Kindersley, David: *Eric Gill*, 1990

MacCarthy, Fiona: *Eric Gill*, 1989

Mosley, James: *Eric Gill and the Golden Cockerel Type*,
in: *Type & Typography*, West New York. 2003, S. 130–147

Physick, J. F.: *The Engraved Work of Eric Gill*, 1963

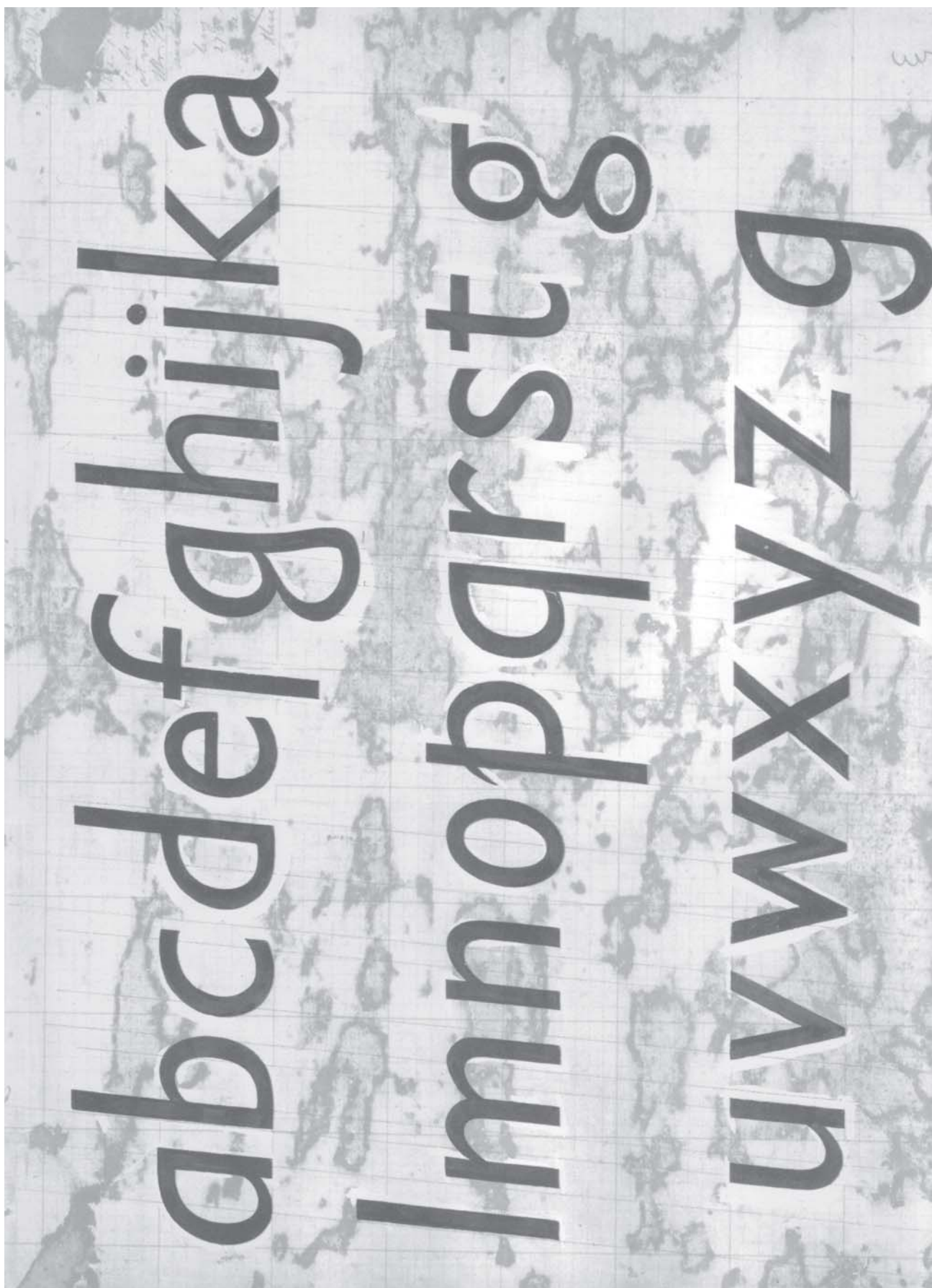
Shewring, *The Letters of Eric Gill*, 1977

Skelton, Christopher: *Eric Gill's Typography Examined*,
in: *Type & Typography*, West New York. 2003, S. 41–49

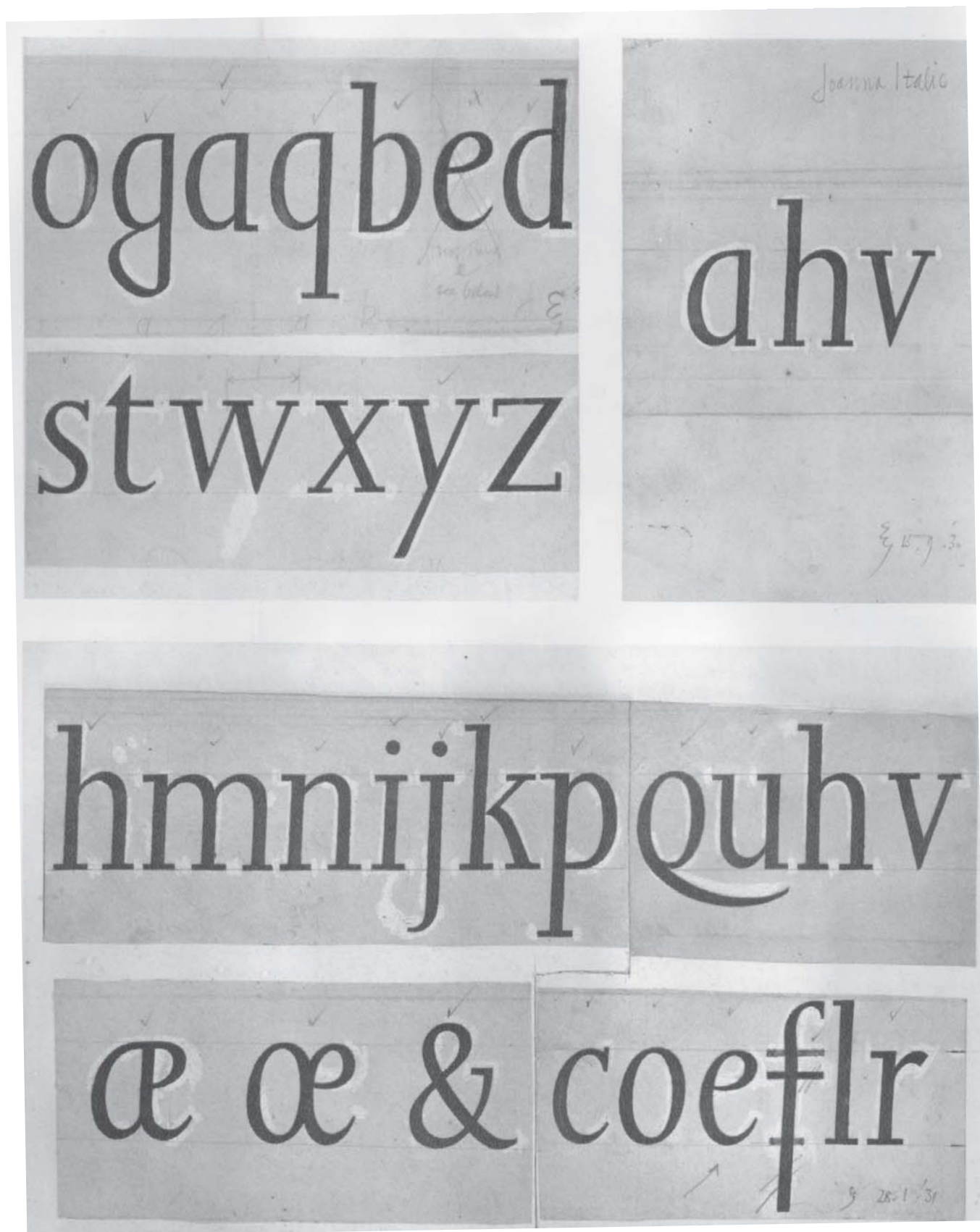
Speaight, Robert: *The Life of Eric Gill*, 1966

Yorke, Malcolm: *Eric Gill: Man of Flesh and Spirit*, 1982

<http://www.klingspor-museum.de>



Entwurf zur Gill Italic



Entwurf zur Joanna Italic

A B C D E F G

H I J K L M N O P Q R

S T U V W X Y Z

W

196

REGD. TRADE MARK
MONOTYPE

GILL SANS LIGHT 362

*†4½ PT. (4D) 5½ SET LINE M-1239
U.A. 82

When jobs have type sizes fixed quickly margins of error will widen unless the determining calculations are based upon the factual rather than hypothetical figures. No variation in the amount of copy can affect the degree of error ABCDEFGHIJKLMNOPQRSTUVWXYZ AB

5 PT. (5D) 6 SET LINE M-1198
U.A. 82

When jobs have type sizes fixed quickly margins of error will widen unless the determining calculations are based upon factual rather than hypothetical figures. No variation in the amount of copy can affect the degree of error once that error ABCDEFGHIJKLMNOPQRSTUVWXYZ

SYNOPSIS IN 10 POINT

ABCDEFGHIJKLMNOPQRSTUVWXYZ & Æ

abcdefghijklmnopqrstuvwxyz f i l f f f i f f l æ æ

ABCDEFGHIJKLMNOPQRSTUVWXYZ & Æ

abcdefghijklmnopqrstuvwxyz f i l f f f i f f l æ æ

1234567890 1234567890

.,:;!'"-([+&\$%*-£\$†])-''?!,;

5½ PT. (5D) 6½ SET LINE M-1220
U.A. Roman 82 Italic 311

When jobs have the type sizes fixed quickly margins of error widen unless determining calculations are based upon factual rather than When jobs have type sizes fixed quickly margins of error widen unless the determining calculations ABCDEFGHIJKLMNOPQRSTUVWXYZ ABCD

6 PT. (6D) 6½ SET LINE M-1220
U.A. Roman 82 Italic 311

When jobs have the type sizes fixed quickly margins of error widen unless determining When jobs have type sizes fixed quickly margins of error widen unless the determining calculations ABCDEFGHIJKLMNOPQRSTUVWXYZ ABCD

6D ON 7 PT. 7 SET U.A. Roman 82 Italic 311 LINE M-1235

When jobs have type sizes fixed quickly margins of error widen unless the determining calculations are based upon fact rather When jobs have type sizes fixed quickly margins of error widen unless the determining calculations are based upon factual rather ABCDEFGHIJKLMNOPQRSTUVWXYZ ABCDEFGHIJKLMNOP

7 PT. (7D) 7½ SET U.A. Roman 82 Italic 311 LINE M-1255

When jobs have type sizes fixed quickly margins of error widen unless the determining calculations are based upon factual rather than hypothetical figures. No variation in When jobs have type sizes fixed quickly margins of error widen unless the determining calculations are based upon ABCDEFGHIJKLMNOPQRSTUVWXYZ ABCDEFGHIJKLM

8 PT. (8D) 8 SET U.A. Roman 82 Italic 311 LINE M-1255

When jobs have type sizes fixed quickly margins of error widen unless the determining calculations are based upon factual rather than hypothetical figures. No When jobs have type sizes fixed quickly margins of error widen unless the determining calculations are based upon ABCDEFGHIJKLMNOPQRSTUVWXYZ ABCDEFGHIJK

8D ON 9 PT. 9 SET U.A. Roman 82 Italic 311 LINE M-1285

When jobs have type sizes fixed quickly margins of error widen unless the determining calculations When jobs have type sizes fixed quickly margins of error widen unless the determining calculations are ABCDEFGHIJKLMNOPQRSTUVWXYZ ABCDEF

9 PT. (9D) 9 SET U.A. Roman 82 Italic 311 LINE M-1285

When jobs have type sizes fixed quickly margins of error widen unless the determining calculations are based upon factual rather than hypothetical When jobs have type sizes fixed quickly margins of error widen unless the determining calculations are ABCDEFGHIJKLMNOPQRSTUVWXYZ ABCDEF

9D ON 10 PT. 9½ SET U.A. Roman 82 Italic 311 LINE M-1302

When jobs have the type sizes fixed quickly margins of error widen unless determining When jobs have type sizes fixed quickly margins of error widen unless the determining calculations ABCDEFGHIJKLMNOPQRSTUVWXYZ ABCD

10 PT. (10D) 9½ SET

U.A. Roman 82 Italic 311 LINE M-1302

When jobs have type sizes fixed quickly margins of error widen unless the determining calculations are based upon factual rather than hypothetical figures. No variation in the amount of copy can When jobs have type sizes fixed quickly margins of error widen unless the determining calculations are based upon factual rather than the ABCDEFGHIJKLMNOPQRSTUVWXYZ ABCDEFGHIJKLMNOPQRS

10D ON 11 PT. 10¼ SET

U.A. Roman 82 Italic 311 LINE M-1327

When jobs have type sizes fixed quickly margins of error widen unless the determining calculations are based upon fact When jobs have type sizes fixed quickly margins of error widen unless the determining calculations are based upon factual rather ABCDEFGHIJKLMNOPQRSTUVWXYZ ABCDEFGHIJKLMNO

11 PT. (11D) 10¼ SET

U.A. Roman 82 Italic 311 LINE M-1327

When jobs have type sizes fixed quickly margins of error widen unless determining calculations are based upon factual rather than hypothetical figures. No variation in the amount When jobs have type sizes fixed quickly margins of error widen unless the determining calculations are based upon factual rather ABCDEFGHIJKLMNOPQRSTUVWXYZ ABCDEFGHIJKLMNO

12 PT. (12D) 11¼ SET

U.A. Roman 82 Italic 311 LINE M-1360

When jobs have type sizes fixed quickly margins of error widen unless the determining calculations are based on When jobs have type sizes fixed quickly margins of error widen unless the determining calculations are based upon ABCDEFGHIJKLMNOPQRSTUVWXYZ ABCDEFGHIJKL

14 PT. (14D) 12½ SET

U.A. Roman 82 Italic 311 LINE M-1415

When jobs have type sizes fixed quickly margins of error widen unless determining calculations are When jobs have type sizes fixed quickly margins of error widen unless the determining calculations are ABCDEFGHIJKLMNOPQRSTUVWXYZ ABCDEFG

14 PT. DISPLAY MATRICES LINE T-1395

The seven documents gaining prizes were judged to be of highest quality
The banks recognize our claim as just
so we are expecting full back payment
ABCDEFGHIJKLMNPQRSTUVWXYZ

16 PT. DISPLAY MATRICES LINE T-1611

The use of mechanical quoins to lock up the job can well improve colour register
Men of most exceptional skill and ability
ABCDEFGHIJKLMNPQRSTUVWXYZ

*A special price is charged for these matrices.

†A special mould is required for these matrices.

For alternative characters and figures see separate specimen page.

REGD. TRADE MARK
MONOTYPE

GILL SANS 262

*5 PT. (5D) 6 SET LINE M-1198
U.A. Roman 82 Italic 311

When jobs have type sizes fixed quickly margins of error widen unless the determining calculations are based upon factual rather than hypothetical figures. When jobs have type sizes fixed quickly margins of error widen unless the determining calculations are based upon factual rather than hypothetical figures.

5 1/2 PT. (6 SHORT DESC.) (5D) 6 1/2 SET
U.A. Roman 82 Italic 311 LINE M-1220

When jobs have type sizes fixed quickly margins of error widen unless the determining calculations are based upon factual rather than hypothetical figures. When jobs have type sizes fixed quickly those margins of error widen unless the determining calculations are based upon factual rather than hypothetical figures.

6 PT. (6D) 6 1/2 SET LINE M-1220
U.A. Roman 82 Italic 311

When jobs have type sizes fixed quickly margins of error widen unless the determining calculations are based upon factual rather than hypothetical figures. When jobs have type sizes fixed quickly those margins of error widen unless the determining calculations are based upon factual rather than hypothetical figures.

6D ON 7 PT. 7 SET LINE M-1235
U.A. Roman 82 Italic 311

When jobs have type sizes fixed quickly the margins of error widen unless the determining calculations are based upon factual rather than hypothetical figures. When jobs have type sizes fixed quickly margins of error widen unless the determining calculations are based upon factual rather than hypothetical figures.

7 PT. (7D) 7 1/2 SET LINE M-1255
U.A. Roman 82 Italic 311

When jobs have type sizes fixed quickly margins of error widen unless determining calculations are based upon factual rather than hypothetical figures. When jobs have type sizes fixed quickly margins of error widen unless the determining calculations are based upon factual rather than hypothetical figures.

10 PT. (10D) 9 1/2 SET U.A. Roman 82 Italic 311 LINE M-1302

When jobs have type sizes fixed quickly the margins of error widen unless determining calculations are based on factual rather than hypothetical figures. When jobs have type sizes fixed quickly margins of error widen unless the determining calculations are based on factual rather than hypothetical figures.

10D (11 SHORT DESC.) ON 11 PT. 10 1/4 SET
U.A. Roman 82 Italic 311 LINE M-1327

When jobs have type sizes fixed quickly margins of error widen unless determining calculations are based on factual rather than hypothetical figures. When jobs have type sizes fixed quickly the margins of error widen unless determining calculations are based on factual rather than hypothetical figures.

SEE CENTRE PANEL FOR THE 11 PT. SIZE

12 PT. (11D) 11 1/4 SET U.A. Roman 82 Italic 311 LINE M-1360

When jobs have type sizes fixed quickly those margins of error widen unless determining calculations are based on factual rather than hypothetical figures. When jobs have type sizes fixed quickly margins of error widen unless determining calculations are based on factual rather than hypothetical figures.

Combinable with Gill Sans Bold Series 275

11 PT. (11D) 10 1/4 SET U.A. Roman 82 Italic 311 LINE M-1327

Gill Sans made its first appearance before the printing industry in 1928 in the programme of the Federation of Master Printers' Conference. This was the titling, Series 231, which had been commissioned by The Monotype Corporation Limited from Eric Gill, and was based on an alphabet used by Gill on the facia of a Bristol bookshop. Lower-case letters soon followed and related bolds, titlings and other variants were added from time to time until the Gill family contained some twenty-four series. Gill's design followed but was not in any sense an imitation of the more theoretical, geometric sans serifs of German origin. The normal shapes of the a, g and t are retained, and the readability gained is further enhanced by the imperceptible gradations of thickness in the characters that curve.

ABCDEFGHIJKLMNOPQRSTUVWXYZ ABCDE

SYNOPSIS IN 10 POINT

ABCDEFGHIJKLMNOPQRSTUVWXYZ&Æ

abcdefghijklmnopqrstuvwxyz&æ

ABCDEFGHIJKLMNOPQRSTUVWXYZ&Æ

abcdefghijklmnopqrstuvwxyz&æ

1234567890 1234567890

.,:;!'"-([+§\$*-£\$§++)-'?!:,

FOR ALTERNATIVE CHARACTERS & FIGURES SEE SEPARATE SPECIMEN PAGE

8 PT. (8D) 8 SET LINE M-1255
U.A. Roman 82 Italic 311

When jobs have type sizes fixed quickly margins of error widen unless the determining calculations are based upon factual rather than hypothetical figures. When jobs have type sizes fixed quickly those margins of error widen unless the determining calculations are based upon factual rather than hypothetical figures.

8D (9 SHORT DESC.) ON 9 PT. 9 SET
U.A. Roman 82 Italic 311 LINE M-1285

When jobs have type sizes fixed quickly margins of error widen unless determining calculations are based on factual rather than hypothetical figures. When jobs have type sizes fixed quickly the margins of error widen unless determining calculations are based on factual rather than hypothetical figures.

9 PT. (9D) 9 SET LINE M-1285
U.A. Roman 82 Italic 311

When jobs have type sizes fixed quickly margins of error widen unless determining calculations are based on factual rather than hypothetical figures. When jobs have type sizes fixed quickly the margins of error widen unless determining calculations are based on factual rather than hypothetical figures.

9D (10 SHORT DESC.) ON 10 PT. 9 1/2 SET
U.A. Roman 82 Italic 311 LINE M-1302

When jobs have type sizes fixed quickly margins of error widen unless determining calculations are based on factual rather than hypothetical figures. When jobs have type sizes fixed quickly margins of error widen unless determining calculations are based on factual rather than hypothetical figures.

14 PT. (14D) 12 1/2 SET U.A. Roman 82 Italic 311 LINE M-1415

When jobs have type sizes fixed quickly margins of error widen unless the determining calculations are based on factual rather than hypothetical figures. When jobs have type sizes fixed quickly margins of error widen unless the determining calculations are based on factual rather than hypothetical figures.

18 PT. (18D) 17 SET LARGE COMPOSITION U.A. 383 LINE T-1841

When jobs have the type sizes fixed quickly margins of error widen unless determining calculations are based on factual rather than hypothetical figures. When jobs have the type sizes fixed quickly margins of error widen unless determining calculations are based on factual rather than hypothetical figures.

14 PT. DISPLAY MATRICES LINE T-1395

In the vocation of typesetting, dexterity may be obtained by quiet, judicious and zealous workers. Far too often people will read books and just lay them down without realizing the quality of their production.

ABCDEFGHIJKLMNOPQRSTUVWXYZ ABCDEFG

REGD. TRADE MARK
MONOTYPE

GILL SANS BOLD 275

*5 PT. (5D) 6 SET LINE M-1198
U.A. 93

When jobs have type sizes fixed quickly margins of error widen unless the determining calculations are based upon factual rather than hypothetical figures. No variation in the amount of copy can affect the degree of error once that error has

*5½ PT. (6 SHORT DESC.) (5D) 6½ SET
U.A. Roman 93 Italic 302 LINE M-1220

When jobs have type sizes fixed quickly margins of error widen unless determining calculations are based upon factual rather than hypothetical figures. No variation in the amount of copy can affect When jobs have type sizes fixed quickly margins of error will widen unless the determining calculations are based upon factual rather than

Related Bold for Gill Sans Series 262

SYNOPSIS IN 10 POINT

ABCDEFGHIJKLMNOPQRSTUVWXYZ

abcdefghijklmnopqrstuvwxyzfi!ffflæœ

ABCDEFGHIJKLMNOPQRSTUVWXYZ&Æ

abcdefghijklmnopqrstuvwxyzfi!ffflæœ

1234567890 &Æ 1234567890

.,:;!?"-([†\$£\$*-£\$††])-'?!;:,

FOR ALTERNATIVE CHARACTERS & FIGURES SEE SEPARATE SPECIMEN PAGE

6 PT. (6D) 6½ SET LINE M-1220
U.A. Roman 93 Italic 302

When jobs have type sizes fixed quickly margins of error widen unless all of the determining calculations are based upon factual rather than hypothetical figures. No variation in the amount of copy can When jobs have the type sizes fixed quickly margins of error will widen unless determining calculations are based upon factual rather

6D ON 7 PT. 7 SET LINE M-1235
U.A. Roman 93 Italic 302

When jobs have their type sizes fixed quickly margins of error widen unless the determining calculations are based upon factual rather than hypothetical When jobs have type sizes fixed quickly margins of error will widen unless all the

7 PT. (7D) 7½ SET U.A. Roman 93 Italic 302 LINE M-1255

When jobs have type sizes fixed quickly margins of error widen unless the determining calculations are based upon factual rather than hypothetical figures. No variation in the amount of copy can affect the When jobs have type sizes fixed quickly margins of error widen unless the determining calculations are based upon

8 PT. (8D) 8 SET U.A. Roman 93 Italic 302 LINE M-1255

When jobs have type sizes fixed quickly margins of error widen unless determining calculations are based upon factual rather than hypothetical figures. No variation in the amount of copy can When jobs have type sizes fixed quickly margins of error widen unless the determining calculations are

8D (9 SHORT DESC.) ON 9 PT. 9 SET LINE M-1285
U.A. Roman 93 Italic 302

When jobs have type sizes fixed quickly margins of error widen unless all of the determining calculations are based on fact When jobs have type sizes fixed quickly margins of error widen unless determining calculations

9 PT. (9D) 9 SET U.A. Roman 93 Italic 302 LINE M-1285

When jobs have type sizes fixed quickly margins of error widen unless all of the determining calculations are based on fact When jobs have type sizes fixed quickly margins of error widen unless determining calculations

9D (10 SHORT DESC.) ON 10 PT. 9½ SET LINE M-1302
U.A. Roman 93 Italic 302

When jobs have type sizes fixed quickly margins of error widen unless all of the determining calculations are based upon When jobs have the type sizes fixed quickly margins of error widen unless determining

10 PT. (10D) 9½ SET U.A. Roman 93 Italic 302 LINE M-1302

When jobs have type sizes fixed quickly margins of error widen unless all of the determining calculations are based upon When jobs have the type sizes fixed quickly margins of error widen unless determining

10D (11 SHORT DESC.) ON 11 PT. 10¼ SET U.A. Roman 93 Italic 302 LINE M-1327

When jobs have the type sizes fixed quickly margins of error widen unless determining calculations are based When jobs have type sizes fixed quickly margins of error widen unless the determining calculations are based upon

11 PT. (11D) 10¼ SET U.A. Roman 93 Italic 302 LINE M-1327

When jobs have the type sizes fixed quickly margins of error widen unless determining calculations are based When jobs have type sizes fixed quickly margins of error widen unless the determining calculations are based upon

12 PT. (12D) 11¼ SET U.A. Roman 93 Italic 302 LINE M-1360

When jobs have type sizes fixed quickly margins of error widen unless the determining calculations When jobs have type sizes fixed quickly margins of

14 PT. (14D) 12½ SET U.A. Roman 93 Italic 302 LINE M-1415

When jobs have the type sizes fixed quickly margins of error widen unless determining When jobs have type sizes fixed quickly margins

18 PT. (18D) 18 SET LARGE COMPOSITION U.A. 402 LINE T-1841

When jobs have type sizes fixed quickly margins of error can widen unless all determining calculations

14 PT. DISPLAY MATRICES LINE T-1395

In the vocation of typesetting, dexterity may be obtained by quiet and judicious workers People often read books not realizing their quality

*A special price is charged for these matrices

6D ON 7 PT. 7 SET LINE M-1235
U.A. 336

When jobs have type sizes fixed quickly the margins of error widen unless the determining calculation is based upon factual rather than hypothetical figures. No variation in the amount ABCDEFGHIJKLMNOPQRSTV

ABCDEFGHIJKLMNOPQRSTUVWXYZ
&/ÆE

abcdefghijklmnopqrstuvwxyzæ
1234567890 .,:!;"'-(+£\$%- ffffff

7D ON 8 PT. 8 SET LINE M-1270
U.A. 336

When jobs have type sizes fixed quickly margins of error widen unless the determining calculation is based upon fact rather than the hypothetical figures. No variations in the ABCDEFGHIJKLMNOPQRSTU

8 PT. (8D) 8 SET LINE M-1255
U.A. 336

When jobs have type sizes fixed quickly the margins of error will widen unless the determining calculations are based upon factual rather than hypothetical figures. No variation in the amount of copy can affect the degree of error once that error has been ABCDEFGHIJKLMNOPQRSTUVWXYZABCD

12 PT. (12D) 11 1/4 SET

When jobs have the type sizes fixed quickly margins of error widen unless determining calculations are based upon factual rather than hypothetical figures. No variation in the ABCDEFGHIJKLMNOPQRSTUVWXYZABCDE

10 PT. (10D) 9 1/2 SET LINE M-1302
U.A. 336

When jobs have type sizes fixed quickly the margins of error widen unless determining calculations are based upon the factual rather than hypothetical figures. No variation in ABCDEFGHIJKLMNOPQRSTUVWXYZ

DISPLAY MATRICES

14 PT.

In the vocation of typesetting as other trades dexterity must be acquired by the quiet judicious and zealous workers ABCDEFGHIJKLMNOPQRSTUVWXYZAI

16 PT.

DISPLAY MATRICES

LINE T-1581

I have equalized my jobs for work excepting the one there ABCDEFGHIJKLMNOPQRSTUVWXYZ ABCDEFGHIJKLMNOPQ

18 PT.

DISPLAY MATRICES

LINE T-1841

Dexterity will be gained by quiet and zealous work ABCDEFGHIJKLMNOPQRSTUVWXYZABCDEFGHIJK

22 PT.

DISPLAY MATRICES

LINE T-2181

The claim is now recognized for payment ABCDEFGHIJKLMNOPQRSTUVWXYZABCI

24 PT.

DISPLAY MATRICES

LINE T-2480

Work by Van Dijck equals the greatest ABCDEFGHIJKLMNOPQRSTUVWXYZC

30 PT.

DISPLAY MATRICES

LINE T-2918

Type with quads form blocks ABCDEGHIJKMNOQRSTUVWXYZ

36 PT.

DISPLAY MATRICES

LINE T-3608

Six documents gain prizes ABCDEGHJKMNQRSTUVWXYZ

SYNOPSIS IN 18 POINT

ABCDEFGHIJKLMNOPQRSTUVWXYZ&Æ
abcdefghijklmnopqrstuvwxyzfi fl ffæœ
£1234567890 .,:;-!?"'([*8- ALTERNATIVE FIGURE 7 F619

18 PT.

DISPLAY MATRICES

LINE T-1985

**The use of mechanical quoins to lock up the
jobs may well improve the colour register**
ABCDEFGHIJKLMNOPQRSTUVWXYZ ABCDE

24 PT.

DISPLAY MATRICES

LINE T-2640

**The vessels may capsize should
the quoted weights be exceeded**
ABCDEFGHIJKLMN OPQRSTUVWXYZ

36 PT.

DISPLAY MATRICES

LINE T-3974

**Sixty sheets of demy
octavo antique wove**
ABCDEFGHIJKLMN OPQR

48 PT.

DISPLAY MATRICES

LINE T-5398

**He expected an
answer quickly**
ABCDEFGHIJKMN

REGD. TRADE MARK
MONOTYPE

GILL SANS CONDENSED 485

SYNOPSIS IN 14 POINT

ABCDEFGHIJKLMNOPQRSTUVWXYZ&Æ
abcdefghijklmnopqrstuvwxyzfifflæœ
£1234567890 .,:!?"-([+\$\$*-

ALTERNATIVE CHARACTERS AND FIGURE

À 581 á 166 ã 70 J 83 M 165 N 210 t 288 U 346 æ 662 1 F901

14 PT.

DISPLAY MATRICES

LINE T-1395

As so often happens, some people having read a book, immediately lay it aside without ever realizing how the excellent design and very high quality of production were both carefully planned by an expert printer and a skilful typographer
ABCDEFGHIJKLMNOPQRSTUVWXYZABCDEFGHIJKLMNOPQRSTUVWXYZABCDEFGHIJKLMNOPQRSTUVWXYZABCDEFGHIJKLMNOPS

18 PT.

DISPLAY MATRICES

LINE T-1841

The bank now recognizes our outstanding claim as quite valid and just, so we expect full payment without any further delay, together with an account of those recent transactions
ABCDEFGHIJKLMNOPQRSTUVWXYZABCDEFGHIJKLMNOPQRSTUVWXYZABCDEFGHIJKLMNOPS

24 PT.

DISPLAY MATRICES

LINE T-2480

Oversize half-tone blocks were frequently set with their edges jutting into the top and side margins to avoid the necessity of any remaking
ABCDEFGHIJKLMNOPQRSTUVWXYZABCDEFGHIJKLMNOPQRSTUVWXYZAB

30 PT.

DISPLAY MATRICES

LINE T-2918

Wherever civilization extends the services of expert and judicious typographers will always be quickly required
ABCDEFGHIJKLMNOPQRSTUVWXYZABCDEFGHIJKLMNOPS

36 PT.

DISPLAY MATRICES

LINE T-3606

Dexterity in the vocation of typesetting may be acquired by all zealous and judicious workers
ABCDEFGHIJKLMNOPQRSTUVWXYZABCDEFGHIJK

The following accents Á Â Ã Ä Å Æ È É Ê Ë Ì Í Î Ï Ó Ô Õ Ö Ù Ú Û Ü Ç Ñ á â ã ä å æ è é ê ë ì í î ï ó ô õ ö ù ú û ü ç ñ ß ij are available in all sizes

REGD. TRADE MARK
MONOTYPE

GILL SANS BOLD CONDENSED 343

5½ PT. (6 PT. SHORT DESC.) (SD)
6½ SET U.A. 316 LINE M-1220

When jobs have type sizes fixed quickly the margins of error widen unless the determining calculations are based on factual rather than the hypothetical ABCDEFGHIJKLMNOPQRSTUVWXYZ ABC

6 PT. (6D) 6½ SET U.A. 316 LINE M-1220

When jobs have type sizes fixed quickly the margins of error widen unless the determining calculations are based on factual rather than the hypothetical ABCDEFGHIJKLMNOPQRSTUVWXYZ ABC

Related to Gill Sans Series 262

SYNOPSIS IN 10 POINT

ABCDEFGHIJKLMNOPQRSTUVWXYZ&Æ
abcdefghijklmnopqrstuvwxyzfifflææ
1234567890 .,:;!?"-([+}\$£\$*—

ALTERNATIVE CHARACTERS

α 166 Å 581 f 180 g 70 J 83 M 165 N 210 Q 91 R 199
t 288 u 346 æ 662 Æ 663 1 F490

8 PT. (8D) 8 SET U.A. 316 LINE M-1255

When jobs have type sizes fixed quickly the margins of error widen unless the determining calculations are based on factual rather than the hypothetical figures. No variation in the amount of copy can affect the degree of error once that error has been made. If instead of the required ten point the estimator specifies nine point for the type size ABCDEFGHIJKLMNOPQRSTUVWXYZ ABC

9 PT. (9D) 9 SET U.A. 316 LINE M-1285

When jobs have type sizes fixed quickly margins of error widen unless the determining calculations are based upon ABCDEFGHIJKLMNOPQRSTUVWXYZ ABCDEFGHIJKLMNOPQRST

10 PT. (10D) 9½ SET U.A. 316 LINE M-1302

When jobs have type sizes fixed quickly margins of error widen unless the determining calculations are based upon ABCDEFGHIJKLMNOPQRSTUVWXYZ ABCDEFGHIJKLMNOPQR

12 PT. (12D) 11¼ SET U.A. 316 LINE M-1360

When jobs have type sizes fixed quickly margins of error widen unless determining calculations ABCDEFGHIJKLMNOPQRSTUVWXYZABCDEFGHIJKL

14 PT. (14D) 12½ SET U.A. 316 LINE M-1415

When jobs have the type sizes fixed quickly margins of error will widen unless all the ABCDEFGHIJKLMNOPQRSTUVWXYZ ABCDEFG

14 PT. DISPLAY MATRICES LINE T-1395

The eighteen documents taking prizes were judged as being of very high quality indeed
ABCDEFGHIJKLMNOPQRSTUVWXYZABCDEFGH

16 PT. DISPLAY MATRICES LINE T-1611

Size, x-height, leading and measure should all be related to the type area
ABCDEFGHIJKLMNOPQRSTUVWXYZ A

18 PT. DISPLAY MATRICES LINE T-1841

The influence of handwriting on type designs was quite striking
ABCDEFGHIJKLMNOPQRSTUVWXYZ

24 PT. DISPLAY MATRICES LINE T-2480

People often read books and just lay them down
ABCDEFGHIJKLMNOPQRSTUVWXYZ ABCDEFGHIJKL

30 PT. DISPLAY MATRICES LINE T-2918

The bank recognizes our claim as valid and just, so we expect prompt payment
ABCDEFGHIJKLMNOPQRSTUVWXYZ ABCD

36 PT. DISPLAY MATRICES LINE T-3606

The six documents taking prizes were judged to be of high quality
ABCDEFGHIJKLMNOPQRSTUVWXYZ

GILL SANS BOLD EXTRA CONDENSED 468

REGISTERED TRADE MARK MONOTYPE

SYNOPSIS IN 14 POINT

ABCDEFGHIJKLMNOPQRSTUVWXYZ&Æ
abcdefghijklmnopqrstuvwxyzfißffiffiæœ

ALTERNATIVE CHARACTER

£1234567890 M 266 .:;!'"-(|{+}\$*-

14 PT. DISPLAY MATRICES LINE T-1637 18 PT. DISPLAY MATRICES LINE T-2086
It is often only too apparent that people read books and then just lay them aside without ever having realized the diversity, quality and exactness that is entailed in each
ABCDEFGHIJKLMNOPQRSTUVWXYZ ABCDEFGHIJKLMNOPQRST The bank recognizes this claim as quite valid and just, so we expect full payment without delay together with an account
ABCDEFGHIJKLMNOPQRSTUVWXYZ ABCDEFGHIJKLMNOPQRSTUVWXYZ ABCDEFGHIJKLMNOPQRSTUVWXYZ

24 PT. DISPLAY MATRICES LINE T-2805
Wherever the sizes of types must be fixed quickly for a job, tables which give the average number of lower case letters to a line will always prove extremely useful
ABCDEFGHIJKLMNOPQRSTUVWXYZABCDEFGHIJKLMNOPQRSTUVWXYZABCDEFGHIJKLMNO

30 PT. DISPLAY MATRICES LINE T-3470
The services of typographers who are expert and judicious will always be very quickly in demand wherever our modern civilization extends
ABCDEFGHIJKLMNOPQRSTUVWXYZABCDEFGHIJKLMNOPQRSTUVWXYZAB

36 PT. DISPLAY MATRICES LINE T-4160
Six of the documents being judged are of the highest quality
ABCDEFGHIJKLMNOPQRSTUVWXYZ ABCDEFGHIJKLMNOPQR

48 PT. DISPLAY MATRICES LINE T-5683
I have equalized my jobs except for those
ABCDEFGHIJKLMNOPQRSTUVWXYZABCDEFGHI

SYNOPSIS IN 24 POINT

A B C D E F G H I J K L M N

O P Q R S T U V W X Y Z & Æ Æ

£ 1 2 3 4 5 6 7 8 9 0 . , : ; ! ? " ' " " - (- \$ > < <

24 PT.

DISPLAY MATRICES

LINE T-2890

W O R K B Y T H E G R E A T V A N D I J C K

A B C D E G H I J K L M N O P Q R S T U V W X Y Z

36 PT.

DISPLAY MATRICES

LINE T-4344

S E V E N G A I N E D P R I Z E S

A B C F H J K L M O Q T U W X Y

42 PT.

DISPLAY MATRICES

LINE T-5096

F O U R D O C U M E N T S

A B G H J K L P Q R V W X Y

48 PT.

DISPLAY MATRICES

LINE T-5828

A B C D E F G H I K L M N

O P Q R S T U V W X Y Z

The following accents Á Â Ã Ä Å Æ È É Ê Ë Ì Í Î Ï Ó Ô Õ Ö Ø Ù Ú Û Ü Ñ are available in all sizes

SYNOPSIS IN 36 POINT

A B C D E F G H I J K L M N O P Q R S

T U V W X Y Z &

£ | 2 3 4 5 6 7 8 9 0 . , ; : ! ? ' " - ○ ► ◄ ||| ||| |||

36 PT.

DISPLAY MATRICES

LINE T 4914

Z E A L F O R T Y P E D E S I G N S

A B C F H J K L M N O R S T U W X Y

48 PT.

DISPLAY MATRICES

LINE T 6528

A B C D E F G H I J K L M N

O P Q R S T U V W X Y Z

SYNOPSIS IN 18 POINT

ABCDEFGHIJKLMNOPQRSTUVWXYZ&ÆCE
£1234567890 .,:!?"-()[]\$%—

ALTERNATIVE CHARACTER R 334

18 PT.

DISPLAY MATRICES

LINE T-2363

EXPECT EQUAL NUMBER OF DEMY SIZE JOBS

24 PT.

DISPLAY MATRICES

LINE T-3160

ZEAL FOR A TYPE DESIGNING JOB
ABCDEFGHIJKLMNOPQRSTUVWXYZ

30 PT.

DISPLAY MATRICES

LINE T-3894

THE WORKS BY VAN DIJCK
ABCDEFGHIJKLMNQRSTUWXYZ

36 PT.

DISPLAY MATRICES

LINE T-4744

QUADS FORM BLOCKS
ABCDEFGHIJKLMNQRSTUY

42 PT.

DISPLAY MATRICES

LINE T-5596

ON ANTIQUE LAID
ABCDEFGHIJKLMPTX

48 PT.

DISPLAY MATRICES

LINE T-6408

ABCDEFGHIJKLMNRS

SYNOPSIS IN 18 POINT

ABCDEFGHIJKLMNOPQRSTUVWXYZ&ÆCE

ALTERNATIVE CHARACTER

£1234567890

R 199

.,:;!?'-()[]\$*-

18 PT.

DISPLAY MATRICES

LINE T-2367

SEVEN OF THESE DOCUMENTS GAINED PRIZES
ABCDEFGHIJKLMNOPQRSTUVWXYZ ABCDEFG

24 PT.

DISPLAY MATRICES

LINE T-3162

TYPE AND QUADS FORM BLOCKS
ABCDEFGHIJKLMNPOQRSTUVWXYZ

30 PT.

DISPLAY MATRICES

LINE T-3884

VARIOUS SIZES OF BLOCKS
ABCDEFGHIJKLMNPQTWXYZ

36 PT.

DISPLAY MATRICES

LINE T-4744

WORK BY VAN DIJCK
ABCEFGHILMPQSTUXZ

48 PT.

DISPLAY MATRICES

LINE T-6372

ABCDEFGHIJKLMN
PQRSTUVWXYZ

A B C D E F G
H I J K L M N O P
Q R S T U V W
X Y Z & . , ! ? - ' '

THIS FACE IS DESIGNED TO WORK AS A SECOND COLOUR TO SERIES NO. 262, 72 POINT
THE CHARACTERS OF THE 262 SERIES SHOULD BE CAST 6 POINTS WIDER

A B C D E F G H
I J K L M N O P Q R
S T U V W X Y Z &
, . : ; ' " - () \$ %
£ 1 2 3 4 5 6 7 8 9 0

SYNOPSIS IN 14 POINT

ABCDEFGHIJKLMNOPQRSTUVWXYZ & Æ Æ

abcdefghijklmnopqrstuvwxyz f i f l f f f f f l æ œ

£ 1 2 3 4 5 6 7 8 9 0 . , ; ! ? ' " - ([\$ —

14 PT.

DISPLAY MATRICES

LINE T-1395

18 PT.

DISPLAY MATRICES

LINE T-1840

The invitations were printed in jet black
and turquoise blue on pale grey paper
ABCDEFGHIJKLMNOPQRSTUVWXYZ

Oversize blocks were set jutting
into many top and side margins
ABCDEFGHIJKLMNOPQRSTUVWXYZ

24 PT.

DISPLAY MATRICES

LINE T-2480

Skilled craftsmen will improvise such unorthodox
equipment as is necessary for unusual kinds of job
ABCDEFGHIJKLMNOPQRSTUVWXYZABCD

30 PT.

DISPLAY MATRICES

LINE T-2918

Eight most easily recognizable type faces
were used for schoolbook legibility tests
ABCDEFGHIJKLMNOPQRSTUVWXYZ

36 PT.

DISPLAY MATRICES

LINE T-3608

Razor sharp knives were required
for trimming these jobs exactly
ABCDEFGHIJKLMNQRSTUWXY

42 PT.

DISPLAY MATRICES

LINE T-4161

Handwriting had a striking
influence on designs of type
ABCDEFGHIJKLMNQRSTUY

8 PT. (8D) 8½ SET LINE M-1230
U.A. 449

WHEN JOBS HAVE TYPE SIZES FIXED QUICKLY MARGINS OF ERROR WIDEN
When jobs have type sizes fixed quickly margins of error widen unless determining calculations are based upon factual rather than hypothetical figures. No variation in the amount of copy can affect the degree of error once that error
When jobs have type sizes fixed quickly margins of error will widen unless the determining calculations are based upon factual rather than hypothetical figures
ABCDEFGHIJKLMNOPQRSTUVWXYZ

9 PT. (9D) 9½ SET LINE M-1260
U.A. 449

WHEN JOBS HAVE TYPE SIZES FIXED QUICKLY MARGINS OF
When jobs have type sizes fixed quickly margins of error widen unless the determining calculations have been based upon factual rather than those hypothetical figures. Variation in the amount of copy cannot
When jobs have type sizes fixed quickly the margins of error widen unless determining calculations are based upon factual rather than their
ABCDEFGHIJKLMNOPQRSTUVWXYZ

12 PT. (12D) 12 SET

U.A. 449

LINE M-1340

Eric Gill, the designer of the Perpetua and Gill Sans series, drew Joanna in 1930 for use at the Hague & Gill press, which he had set up with his son-in-law René Hague. When the press ran into financial difficulties, the design was bought by Messrs. J. M. DENT, the publishers, for whom it was first cut for machine composition by The Monotype Corporation. In this recutting, the italic was designed by Gill. 'Monotype' Joanna was first offered to the trade in 1958. The roman is remarkably open and light in its character, despite the extreme compression of the design; it is both economical in use and inviting to the eye.
ABCDEFGHIJKLMNOPQRSTUVWXYZ

SYNOPSIS IN 10 POINT

ABCDEFGHIJKLMNOPQRSTUVWXYZ&Æ
ABCDEFGHIJKLMNOPQRSTUVWXYZÆ
abcdefghijklmnopqrstuvwxyz&æ
ABCDEFGHIJKLMNOPQRSTUVWXYZ&æ
abcdefghijklmnopqrstuvwxyz&æ
1234567890 1234567890
.,:;!?"-([+§£\$*-§£])"?!:,

10 PT. (10D) 10 SET

U.A. 449

LINE M-1283

WHEN JOBS HAVE TYPE SIZES FIXED QUICKLY MARGINS OF ERROR WIDEN
When jobs have type sizes fixed quickly margins of error widen unless the determining calculations are based upon factual rather than hypothetical figures. No variation
When jobs have type sizes fixed quickly margins of error will widen unless the determining calculations are based on factual
ABCDEFGHIJKLMNOPQRSTUVWXYZ

11 PT. (11D) 11 SET

U.A. 449

LINE M-1310

WHEN JOBS HAVE THE TYPE SIZES FIXED TOO QUICKLY MARGINS OF
When jobs have type sizes fixed quickly margins of error will widen unless the determining calculations are based upon factual rather than hypothetical
When jobs have type sizes fixed quickly margins of error will widen unless the determining calculations are based on
ABCDEFGHIJKLMNOPQRSTUVWXYZ

SEE CENTRE PANEL FOR THE 12 PT. SIZE

14 PT. (14D) 14 SET

U.A. 449

LINE M-1460

18 PT.

DISPLAY MATRICES

LINE T-1755

WHEN JOBS HAVE THE TYPE SIZES FIXED
When jobs have their type sizes fixed quickly margins of error widen unless
When jobs have their type sizes fixed quickly
ABCDEFGHIJKLMNOPQRSTUVWXYZ

The six documents taking prizes were judged as being of very high quality
A few mixed varying size blocks pique the judges
ABCDEFGHIJKLMNOPQRSTUVWXYZ

24 PT.

DISPLAY MATRICES

LINE T-2364

Dexterity must be gained by quiet and zealous work
Of the documents judged, six having quality will be taking prizes
ABCDEFGHIJKLMNOPQRSTUVWXYZ ABCDEFGHIJKL

30 PT.

DISPLAY MATRICES

LINE T-2918

Expect equal workings of demy size jobs
I have equalized my jobs for work excepting that one
ABCDEFGHIJKLMNOPQRSTUVWXYZ ABE

*5½ PT. (6D) (6 SHORT DESC.) 7¼ SET
U.A. 96 LINE M-1205

WHEN JOBS HAVE TYPE SIZES FIXED QUICKLY MARGINS OF ERROR WIDEN
When jobs have type sizes fixed quickly the margins of error widen unless the determining calculations are based upon factual rather than
When jobs have type sizes fixed quickly margins of error widen unless determining
ABCDEFGHIJKLMNQRSTUWVXY

6 PT. (6D) 7¼ SET LINE M-1205
U.A. 96

WHEN JOBS HAVE TYPE SIZES FIXED QUICKLY MARGINS OF ERROR WIDEN
When jobs have type sizes fixed quickly the margins of error widen unless the determining calculations are based upon factual rather than
When jobs have type sizes fixed quickly margins of error widen unless determining
ABCDEFGHIJKLMNQRSTUWVXY

8 PT. (8D) 8 SET LINE M-1221
U.A. 96

WHEN JOBS HAVE TYPE SIZES FIXED QUICKLY THE MARGINS OF ERROR
When jobs have type sizes fixed quickly margins of error widen unless all the final calculations are based upon factual rather than
When jobs have their type sizes fixed quickly margins of error widen unless
ABCDEFGHIJKLMNQRSTUWVXY

9 PT. (8D) 8½ SET LINE M-1210
U.A. 96

WHEN JOBS HAVE THE TYPE SIZES FIXED QUICKLY THE MARGINS OF
When jobs have type sizes fixed quickly margins of error widen unless determining calculations are based upon factual rather
When jobs have the type sizes fixed quickly the margins of error widen
ABCDEFGHIJKLMNQRSTUWVXY

13 PT. (12D) 11¼ SET LINE M-1278
U.A. 96

WHEN JOBS HAVE TYPE SIZES FIXED QUICKLY
When jobs have the type sizes fixed quickly margins of error widen unless determining
When jobs have type sizes fixed quickly margins
ABCDEFGHIJKLMNQRSTUWVXYZ AB

14 PT. (14D) 13 SET LINE M-1380
U.A. 96

WHEN JOBS HAVE THEIR TYPE SIZES FIXED
When jobs have type sizes fixed quickly
When jobs have their type sizes fixed quickly
ABCDEFGHIJKLMNQRSTUWVXYZ

18 PT. (18D) 16½ SET LINE T-1635
U.A. 96

When jobs have type sizes fixed quickly margins of error widen unless determining calculations
ABCDEFGHIJKLMNQRSTUWVXYZ

Combinable with Perpetua Bold Series 461

12 PT. (12D) 11 SET U.A. 96 LINE M-1260

PERPETUA, is one of the best-known and most widely-used of contemporary type faces. It was designed by the great sculptor Eric Gill (1882-1940), and is in fact a translation into metal type of the chiselled lettering in stone which had established Gill's European reputation as a fine creative craftsman before his 'Stations of the Cross' at Westminster Cathedral brought him fame as an artist. The Monotype Corporation commissioned the design from Gill in 1927, and in that year one experimental fount was cut by hand from the sculptor's own drawings. The final version of the face then evolved by subtle modifications and had its first appearance in an inset in number 7 of THE FLEURON in 1930. *The italic of Perpetua is full of character and is unusually legible, and constitutes an invaluable aid to the designer of title-pages, jackets, advertisements, etc.*
ABCDEFGHIJKLMNQRSTUWVXYZ ABCDE

SYNOPSIS IN 10 POINT

ABCDEFGHIJKLMNQRSTUWVXYZ&ÆŒ

ABCDEFGHIJKLMNQRSTUWVXYZ&ÆŒ

abcdefghijklmnopqrstuvwxyzfifffiffllæœ

ABCDEFGHIJKLMNQRSTUWVXYZ&ÆŒ

abcdefghijklmnopqrstuvwxyzfifffiffllæœ

1234567890 .,:;!?'-({~\$£\$*-£})''?!,;., 1234567890

F682 SOME SELECTED ALTERNATIVE CHARACTERS & FIGURES F683

1234567890 U 8 y 131 y 139 J 83 U 226 1234567890

10 SHORT DESC. ON 9 PT. (8D) 9 SET
U.A. 96 LINE M-1212

When jobs have the type sizes fixed quickly the margins of error widen unless the determining calculations are based upon factual rather than hypothetical figures. No variation in
When jobs have type sizes fixed quickly margins of error widen unless all the determining calculations are based upon

10 PT. (9D) 9 SET U.A. 96 LINE M-1212

WHEN JOBS HAVE TYPE SIZES FIXED QUICKLY MARGINS OF ERROR WIDEN
When jobs have type sizes fixed quickly the margins of error widen unless the determining calculations are based upon factual rather than hypothetical figures. No variation in
When jobs have type sizes fixed quickly margins of error widen unless the final calculations are based upon factual and
ABCDEFGHIJKLMNQRSTUWVXYZ

11 PT. (10D) 10 SET U.A. 96 LINE M-1237

WHEN JOBS HAVE TYPE SIZES FIXED QUICKLY THE MARGINS OF ERROR
When jobs have type sizes fixed quickly margins of error widen unless the final calculations are based upon factual rather than
When jobs have their type sizes fixed quickly the margins of error widen unless the determining calculations
ABCDEFGHIJKLMNQRSTUWVXY

SEE CENTRE PANEL FOR THE 12 PT. SIZE

14 PT. DISPLAY MATRICES LINE T-1308

Dexterity in the vocation of typesetting may be acquired by quiet, judicious and zealous workers
A number of mixed, varying size blocks pique the judges
ABCDEFGHIJKLMNQRSTUWVXYZ ABCDES

18 PT. DISPLAY MATRICES LINE T-1635

Very often people read books and just lay them aside not realizing the quality
Become experts in the vocation of typesetting
ABCDEFGHIJKLMNQRSTUWVXYZ

24 PT. DISPLAY MATRICES LINE T-2204

I have equalized in my job for work except those over there
Equal workings for demy size jobs
ABCDEFGHIJKLMNQRST

*A special price is charged for these matrices

REGD. TRADE MARK
MONOTYPE

PERPETUA BOLD 461

6 PT. (6D) 7 1/4 SET LINE M-1205
U.A. 379

When jobs have type sizes fixed quickly margins of error widen unless determining calculations are based upon factual rather than hypothetical figures. No variation in the amount of copy can affect the degree of error once that error has been made. If instead of the required ABCDEFGHIJKLMNOPQRSTUVWXYZ

Related Bold for Perpetua Series 239

SYNOPSIS IN 10 POINT

ABCDEFGHIJKLMNOPQRSTUVWXYZ&Æ

abcdefghijklmnopqrstuvwxyzfi fl ffi flæ

1234567890 .,:;!?"-([+§\$*—

ITALIC AVAILABLE IN 24, 30, 36, 42, 48 PT. ONLY

U 254 ALTERNATIVE CHARACTER AND FIGURES 1234567890 F1034

8 PT. (8D) 8 SET U.A. 379

LINE M-1221

When jobs have type sizes fixed quickly the margins of error widen unless the determining calculations are based upon factual rather than hypothetical figures. No variation in the amount of copy can affect the

ABCDEFGHIJKLMNOPQRSTUVWXYZ

9 PT. (8D) 8 1/2 SET U.A. 379 LINE M-1210

When jobs have type sizes fixed quickly margins of error widen unless determining calculations are based upon factual rather than hypothetical ABCDEFGHIJKLMNOPQRSTUVWXYZ ABCDEFG

10 (SHORT DESC.) ON 9 PT. (8D) 9 SET U.A. 379 LINE M-1212

When jobs have the type sizes fixed quickly margins of error widen unless determining calculations are based upon factual rather than

10 PT. (9D) 9 SET U.A. 379 LINE M-1212

When jobs have the type sizes fixed quickly margins of error widen unless determining calculations are based upon factual rather than ABCDEFGHIJKLMNOPQRSTUVWXYZ ABCDE

11 PT. (10D) 10 SET U.A. 379 LINE M-1237

When jobs have type sizes fixed quickly margins of error will widen unless all the ABCDEFGHIJKLMNOPQRSTUVWXYZAB

12 PT. (12D) 11 SET U.A. 379 LINE M-1260

When jobs have the type sizes fixed quickly margins of error widen unless ABCDEFGHJKLMNOPQRSTUVWXYZ

13 PT. (12D) 11 3/4 SET U.A. 379 LINE M-1278

When jobs have the type sizes fixed quickly the margins of error widen ABCDEFGHJKLMNOPQRSTUVWZ

14 PT. (14D) 13 SET

U.A. 379

LINE M-1380

When jobs have the type sizes fixed quickly margins of error widen unless determining ABCDEFGHIJKLMNOPQRSTUVWXYZ ABCDI

14 PT.

DISPLAY MATRICES

LINE T-1308

We have equalized all of our jobs for work with the exception of those now over there ABCDEFGHIJKLMNOPQRSTUVWXYZ ABCDI

16 PT.

DISPLAY MATRICES

LINE T-1534

The bank recognizes our claim as valid ABCDEFGHIJKLMNOPQRSTUVWXYZA

18 PT.

DISPLAY MATRICES

LINE T-1635

Expert in the vocation of typesetting ABCDEGHJKLMNOPQRSTUVWXYZ

24 PT.

DISPLAY MATRICES

LINE T-2204

Six documents take prizes
Dexterity must be acquired
ABDEGHJKLMNOPQRSTUVWXYZ

30 PT.

DISPLAY MATRICES

LINE T-2744

The few mixed blocks of varying size
Typographers will always be required
ABCDEFGHIJKLMNOPQRSTUVWXYZ

36 PT.

DISPLAY MATRICES

LINE T-3344

Type and quads for even blocks
Zeal for this type designing job
ABCDEGHJKLMNOPQSTUWYZ

SYNOPSIS IN 14 POINT

ABCDEFGHIJKLMNOPQRSTUVWXYZ&Æ

£1234567890 ,;!?"-([†\$*\$—

14 PT.

DISPLAY MATRICES

LINE T-1730

THE BANK RECOGNIZES THIS CLAIM AS QUITE VALID AND
 JUST SO WE ARE EXPECTING FULL AND PROMPT PAYMENT
 ABCDEFGHIJKLMNOPQRSTUVWXYZABCDEFGHIJKLMNOPQRSTUVWXYZ

18 PT.

DISPLAY MATRICES

LINE T-2224

SIX OF THE DOCUMENTS JUDGED GAINED PRIZES
 ABCDEFGHIJKLMNOPQRSTUVWXYZ ABCDEFGHIJK

24 PT.

DISPLAY MATRICES

LINE T-2970

WORKS BY THE GREAT VAN DIJCK
 ABCDEFGHIJKLMNOPQRSTUVWXYZA

30 PT.

DISPLAY MATRICES

LINE T-3644

QUADS FORM EVEN BLOCKS
 ABDEGHJKMNPQRSTUVWXYZ

36 PT.

DISPLAY MATRICES

LINE T-4444

EXPECT FULL PAYMENT
 ABDEGHJKMNQRSUVWZ

42 PT.

DISPLAY MATRICES

LINE T-5236

TYPE WITH QUADS
 ABCDEFGHIJKLMNOPOR

SYNOPSIS IN 12 POINT

ABCDEFGHIJKLMNOPQRSTUVWXYZ&Æ

abcdefghijklmnopqrstuvwxyzfiflffffifflæœ

1234567890 .,:;!?"'-([£—

ALTERNATIVE CHARACTER

M 133

12 PT. (12D) 11 SET

U.A. 320

LINE M-1310

When jobs have type sizes fixed quickly margins of error widen unless all determining calculations are based upon factual rather than hypothetical figures. No variation in the amount of copy can affect the degree of error once that error has been made. If instead of ten point the estimator now

ABCDEFGHIJKLMNOPQRSTUVWXYZABCDE

14 PT. (14D) 13 SET

U.A. 320

LINE M:1437

When jobs have their type sizes fixed quickly margins of error widen unless all determining calculations are based on factual rather than hypothetical figures. No variation in the total amount of copy can affect the degree of error

ABCDEFGHIJKLMNOPQRSTUVWXYZ

18 PT.

DISPLAY MATRICES

LINE T-1841

The use of mechanical quoins for locking up a job may very well improve the colour register particularly in the case of exceptionally large forms
ABCDEFGHIJKLMNOPQRSTUVWXYZABCDEFGHIJKLMNOPQRSTUVWXYZ

48 PT.

DISPLAY MATRICES

LINE T-4978

abcdefghijklmnopqrstuvwxyz
ABCDEFGHIJKLMNOPQRSTUVWXYZ

The following accents Á Â Ã Ä Å Æ È É Ê Ë Ì Í Î Ï Ó Ô Õ Ö Ø Ù Ú Û Ü Ç Ñ á â ã ä å æ é ê ë ì í î ï ó ô õ ö ø ú û ü ç ñ ß ij are available in all sizes